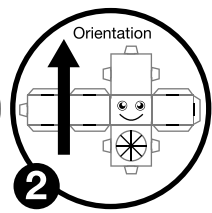
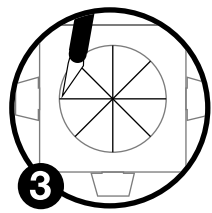


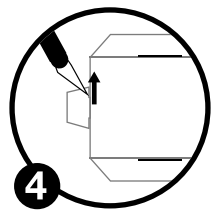
**1** Cut out body, head & arms along solid outer lines.



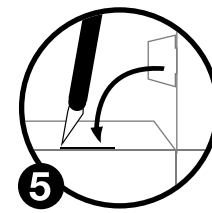
**2** Make sure you don't draw your face upside down.



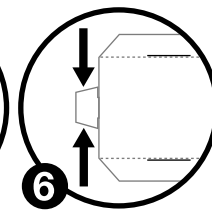
**3** Cut along the black lines to make opening for body.



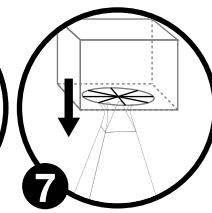
**4** Make two slits on either side of tabs.



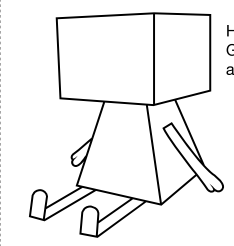
**5** Cut along the black lines to make opening for tabs.



**6** Then pinch in sides of tabs slightly.



**7** Bend flaps on body slightly to help hold head in place.



Hello! I'm \_\_\_\_\_  
Get creative with me, cut me out  
and put me on your desk.

